

RAINBOW Earrings
Design by *Angel Accessories*

Rainbow
Design by *Angel Accessories*



DELOS® PAR PUCA® PARIS
COLLECTION TRANSPARENT CONSTELLATION

Materials for 1 earring:

- DELOS® PAR PUCA® PARIS COLLECTION TRANSPARENT CONSTELLATION (8 pcs : garnet, red, orange, yellow, blue, green, violet, fuchsia)
- Fireline 4 lb
- Earring hook
- MINOS® Par Puca (32 pcs)
- Pearl 4 mm (1 pcs)
- TearDrop 1,5 cm
- Miyuki Round Rocailles (RR 11/0) Galvanized Gold
- Miyuki Round Rocailles (RR 15/0) Galvanized Gold
- Miyuki Round Rocailles (RR 15/0) Metallic Light Bronze



★ These earrings are easy to make, but require a little attention in arranging the pieces for a nice result.

- The first step consists of inserting a Delos bead and 3 Minos beads onto the needle.
- Return the needle through the Delos bead, through the hole on the edge of the bead (in this pattern you will not use the middle hole of the Delos bead).
- Keep a thread end of about 4 cm to secure the work.
- The 3 Minos beads will form a peak above the Delos bead. Arrange them carefully to achieve a harmonious peak.

1



- After you have finished with the Delos bead, insert 2 Miyuki RR 15/0 beads, 1 Minos, 2 Miyuki RR 15/0 beads and the earring hook onto the needle.
- Tie a very tight knot with the remaining end of the thread. Re-insert the needle into the Delos bead and the rest of the beads.
- Exit the needle according to the yellow arrow, more precisely through the first Miyuki RR 15/0 bead at the base of the Delos.

2

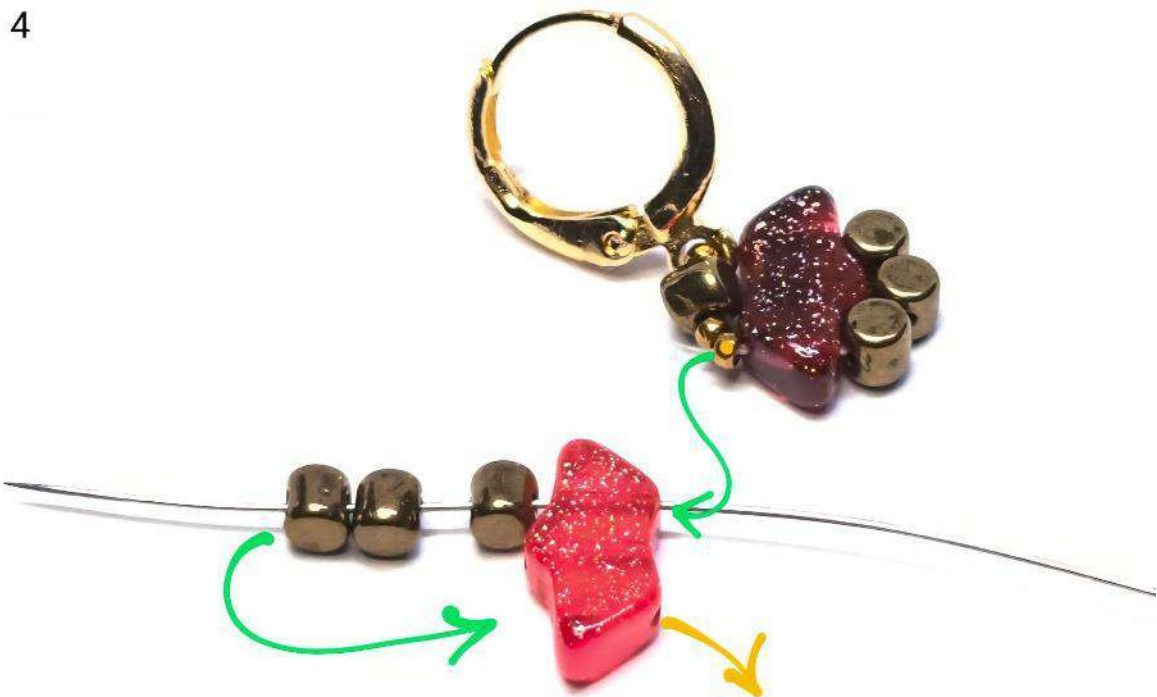


3



✦ This row of parts assembly requires a little more attention. The parts must be arranged and tightened very well.

- Add the next Delos bead. Proceed exactly as the first bead. Form a peak with the 3 Minos beads. Be sure to arrange them in an aesthetic position.



- After you exit the Delos bead, insert 2 Miyuki RR 15/0 beads, 1 Minos and 2 Miyuki RR 15/0 beads. Insert the needle into the first hole of the Delos,
- Pass the needle through all the beads once more.
- Start with the first Miyuki RR 15/0 from the base (see the bead marked in yellow). Arrange everything you have worked so far and tighten the thread very well. This step will be repeated until you have added all your Delos beads.

5



- Add the 3rd Delos piece. Repeat the steps as for the first 2. Arrange the beads well and tighten the thread very well.

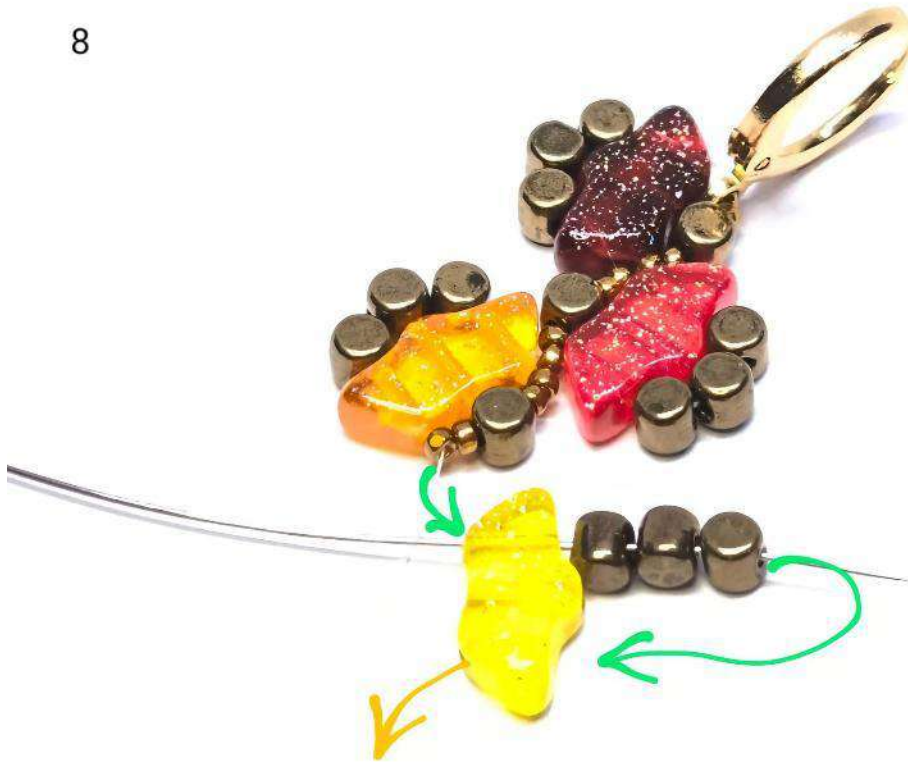
6



7



8



- Continue adding Delos beads. It is your choice how long you want the earrings to be but always have an even number of Delos beads. When you have finished working on the last Delos bead, take the needle out immediately from it (see arrow)

9



- It's time to add the teardrop. Insert 1 Miyuki RR 15/0, the pearl, the crystal and another 1 Miyuki RR 11/0 onto the needle.



- Return with the needle through the crystal keeping the Miyuki RR 11/0 bead as the end. Pass the needle through all the marked beads and exit after the Minos bead at the base of the Delos bead. (See yellow arrow)



- Connect to the Minos bead group via 1 Miyuki RR 11/0 and 2 Miyuki RR 15/0. Exit with the needle after the first Minos in the group of 3.

12



- Cover the top Minos bead with 6 Miyuki RR 15/0. Pass the needle through the third Minos. (See arrow)

13



- Link to the Minos bead at the base with 2 Miyuki RR 15/0 beads and 1 Miyuki RR 11/0.

14



- After you have exited the Minos at the base, connect to the next group of 3 Minos through 1 Miyuki RR 11/0 and 2 Miyuki RR 15/0.
- Repeat the steps until you reach the last Delos bead on this row..

15



16



17



- After covering the last Minos bead, the top one, pass the needle through the 3rd Minos bead, through the Delos bead, through the earring hook and the first Miyuki RR 15/0 bead.

18



- Between the 2 Miyuki RR 15/0 beads insert a Miyuki RR 11/0 bead. This way the earring hook will remain fixed in a stable position.
- Go out with the needle after the Minos bead. (See yellow arrow)



- The same steps will be followed as on the other side of the earring.

20



21



- After covering the last Minos bead, pass the needle through the marked beads. You will have one more row to work.
- You will work this row with Miyuki RR 15/0 beads and it will be a row to reinforce and cover the rest of the Minos beads.

22



23





- After covering the 2 Minos beads, bring the needle up above the bottom one. Here you will insert a Miyuki RR 15/0
- Exit the needle before the next Minos bead. (follow the marked beads) .

25



- Continue covering the Minos beads with 3 Miyuki RR 15/0 beads.

26



- The last Minos bead will remain uncovered. Pass the needle through it and out the other side of the earring, before the next Minos bead.



- Continue to cover each Minos bead in turn.
- Don't forget to arrange the beads and tighten the thread so that the work fits perfectly.

28



29



- The last Minos bead will remain uncovered.
- That's all. Now you can weave the rest of the remaining thread.



31



I hope you like it! 🍀